



**EVOLUTION  
WHEEL™**

# **EWRS-AT SERIES**

## **WHY PEOPLE CHOOSE OUR PRODUCT**

- ✓ **EASY ON-SITE SERVICEABILITY**
- ✓ **INCREASED SAFETY AND STABILITY**
- ✓ **LONG WEAR LIFE**
- ✓ **LOW OPERATING COST/HR**



# EWRS-AT SERIES



## BUILT FOR TODAY'S TOUGH JOBSITE DEMANDS

The EWRS-AT series of non-pneumatic tires were designed to meet the needs of today's job site demands. We came up with a way to offer you serviceability, traction and maximum stability all in one!

With serviceable tire segments, the need for a service truck and specialized technicians is all but eliminated. We have reduced your service tooling down to only a wrench in your operator's back pocket and repair parts are readily available in your nearest onsite storage container or in the toolbox of your pickup.

We weren't afraid to bring you the largest tread lugs in the industry for serious traction and a long wear life. This gave us two things; large voids in our tread pattern allowing for unmatched material cleanout and a long wear life on a bigger lug.

We topped it off by engineering a smooth ride into our design. We worked hard to bring you a proprietary compound that allows enough compression to reduce operator fatigue while standing up to heavy loads. Did we mention that the compound is also designed so that it won't stress crack? Only a premium compound will do for a premium product; that's the Evolution Wheel standard.

Serviceable Segments for Quick and Easy In-Field Repair and a Lower Cost of Operating.

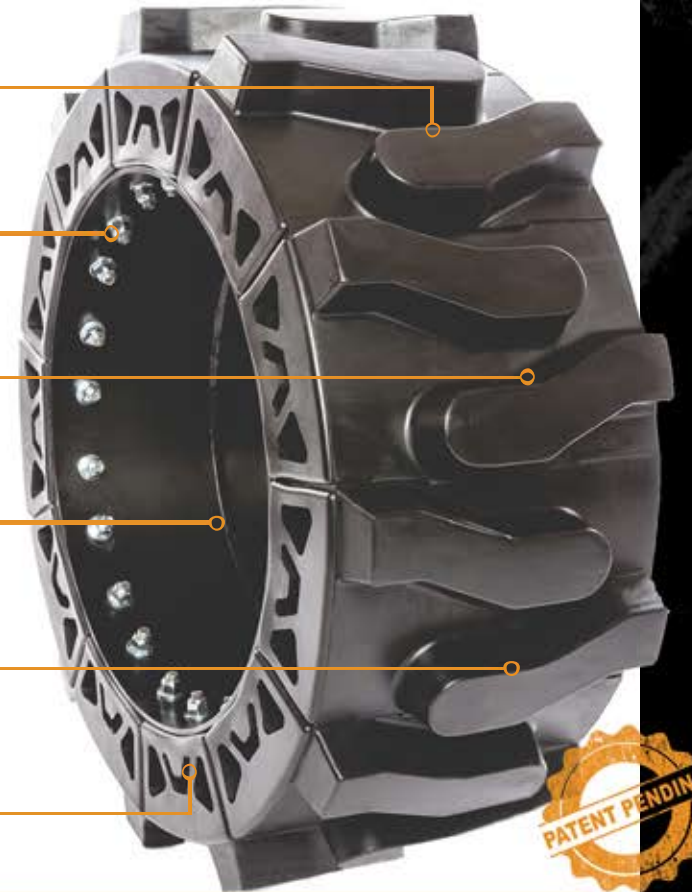
Only Service Tool Required is a Standard Wrench or Socket.

No Centre Wear Bars Mean Longer Wear Life and Superior Traction.

SSAB Strenx® 700 Steel for Maximum Strength and Toughness.

Tallest and Widest Lugs in the Industry for Increased Traction and Stability.

Specially Engineered Core Design to Allow for a Smooth Ride and Maximum Strength.



### Actual Tire Dimensions

Tire Size	Overall Diameter		Width	Rim Diameter	Wearable Tread Depth	Weight	Max Load Rating
	inch (mm)	inch (mm)	inch (mm)	inch (mm)	32 <sup>nd</sup> (mm)	lb (kg)	lb (kg)
10x16.5	31.5"	10"	20.5"	48	200 lb	4710 lb	
(31x12-20)	(800)	(254)	(521)	(38)	(91 kg)	(2136 kg)	
12x16.5	32.5"	12"	20.5"	52	220 lb	6780 lb	
(33x12-20)	(826)	(305)	(521)	(42)	(100 kg)	(3075 kg)	
14x17.5	36"	14"	24"	52	360 lb	8540 lb	
(36x14-24)	(915)	(356)	(610)	(42)	(163 kg)	(3874 kg)	

## CONTACT

**CALL US**

North America: (888) 249-4790  
International: (204) 256-2098

**WEB**

[evolutionwheel.com](http://evolutionwheel.com)

**EMAIL**

[info@evolutionwheel.com](mailto:info@evolutionwheel.com)