



VMAXUSA is a heavy equipment import company representing the best new technology in emissions free equipment. We are a USA owned and operated company, National Headquarters located in Butte, Montana. VMAXUSA provides customers with new options in heavy electric machinery. forklifts, scissor lifts, track scissor lifts, wheeled front loaders, excavators, mini front loaders, skid steers and more. Check out our new line of 2024 products for your lifting needs.

950EV Front Loader



LT950EV Electric Loader

- ▶ Smart Layout
- ▶ Safe and efficient
- ▶ Energy efficient and environmentally friendly
- ▶ Economical and practical



VMAX
USA

Main technical performances and parameters

Model	LT950EV
Rated load	5500kg
Bucket Capacity	3-4.5m ³
Operating weight	18500kg
Rated power	290kw
Dumping height	3600mm
Dumping reach	1240mm
Wheel Base	3350mm
Track Base	2250mm
Maximum traction	170kN
Maximum Rising Power	174kN
Three Items and Time	9.7s
Lifting Time	5.8s
Descending Time	3.5s
Maximum climbing angle	28°
Steering angle	40°
Forward gear	18/36Km/h
Back gear	18/36Km/h
Overall Dimensions (L*W*H)	8660mmX2960mmX3520mm

Model		LT950EV	
Drive Axle	Brand	Dry Bridge	
Working Hydraulic System	Type	Double Pump Confluence	
	Operation Method	Pilot Control	
Steering Hydraulic System	Type	Flow Amplification	
	Service Brake	Gas cap oil, clamp disc type	
Braking System	Hand Brake	Pneumatic control, clamp type	
	Air Conditioning System	Type	Electric, heating and cooling
Control System	System voltage	DC24V	
Control System	Specification	23.5-25	
Battery Life	General Working condition	6~10h	
	Heavy load condition	5~6h	
Charging Time	24kW charging pile	60min	
Charging Pile Specifications	Optional Specification	240-360kW	
	Antifreeze	45L	
	Transaxle oil	2X17L	
Oil Filling	Hydraulic oil	200 L	
	Battery Motor		Unit
	Power Battery	Type	Lithium iron phosphate
Rated Capacity		456Ah	
Store energy		282kWh	
Voltage		618V	
Protection Class		IP67	
Cooling method		liquid cooling	
Rated power		2x100kw	
Drive motor	Protection Class	IP67	
	Cooling method	water cooling	
	Ambient temperature	-40~55°C	
	Altitude	4500m	
	Rated power	90kW	
Hydraulic motor	Protection Class	IP67	
	Cooling method	liquid cooling	
	Ambient temperature	-40~60°C	
	Altitude	4500m	

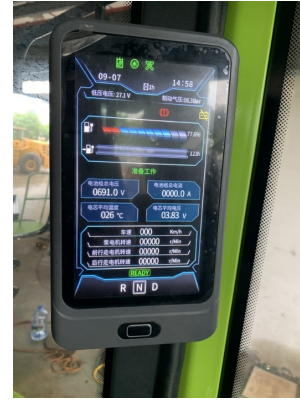


Core advantages of pure electric loader

Zero emissions, low noise, green, worry-free use

Industry's most advanced three-motor technology

The LT950EV adopts the industry's most advanced "three-motor" technology solution, as opposed to the common 'two-motor' design, the LTB958 discards the traditional gearbox and adopts independent drive for the front and rear axles, the drive system is highly integrated, simple and reliable, with high efficiency and stable drive capacity.



Pure Electric loader compared with conventional fuel loader use

Energy Saving Analysis	Fuel 50 Loader	Pure electric 50 Loader
Unit cost of energy consumption (CNY/L;CNY/kwh)	7	0.6
Average hourly energy consumption (L,kwh)	15	40
Daily working hours (H)	12	12
Operating days per year (DAY)	300	300
Daily energy cost (CNY)	1260	288
Annual energy cost (CNY)	37800	8640
Comparision of annual oil and electricity consumption differentials (CNY/YEAR)	29160	
Annual maintenance cost (CNY)	3500	1500
Total annual cost	41300	10140
Annual savings on pure electric loaders (CNY/YEAR)	31160	

High level of safety and comfort, energy saving and power saving.

Large capacity battery for long life, quick and easy charging.

Fitted with third generation switched reluctance motors

Pure electric, zero emission, low noise, no pollution, maintenance free for life

