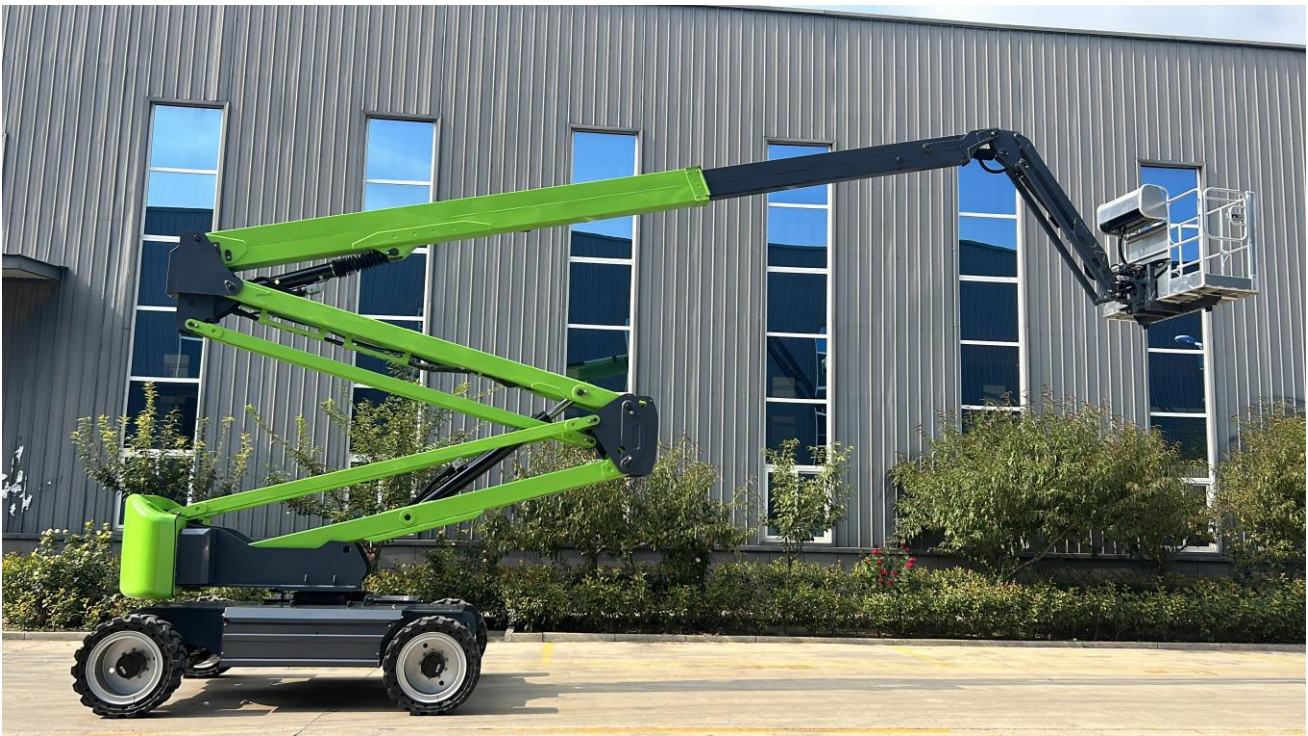
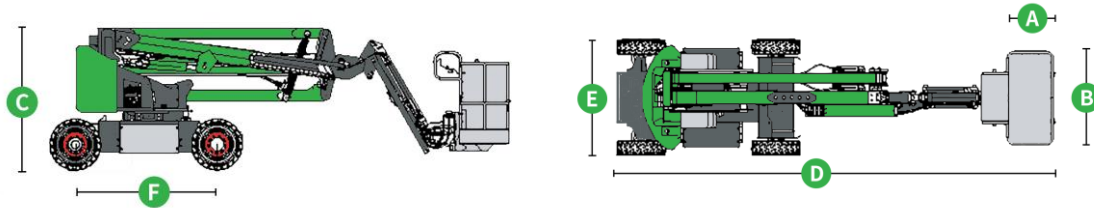
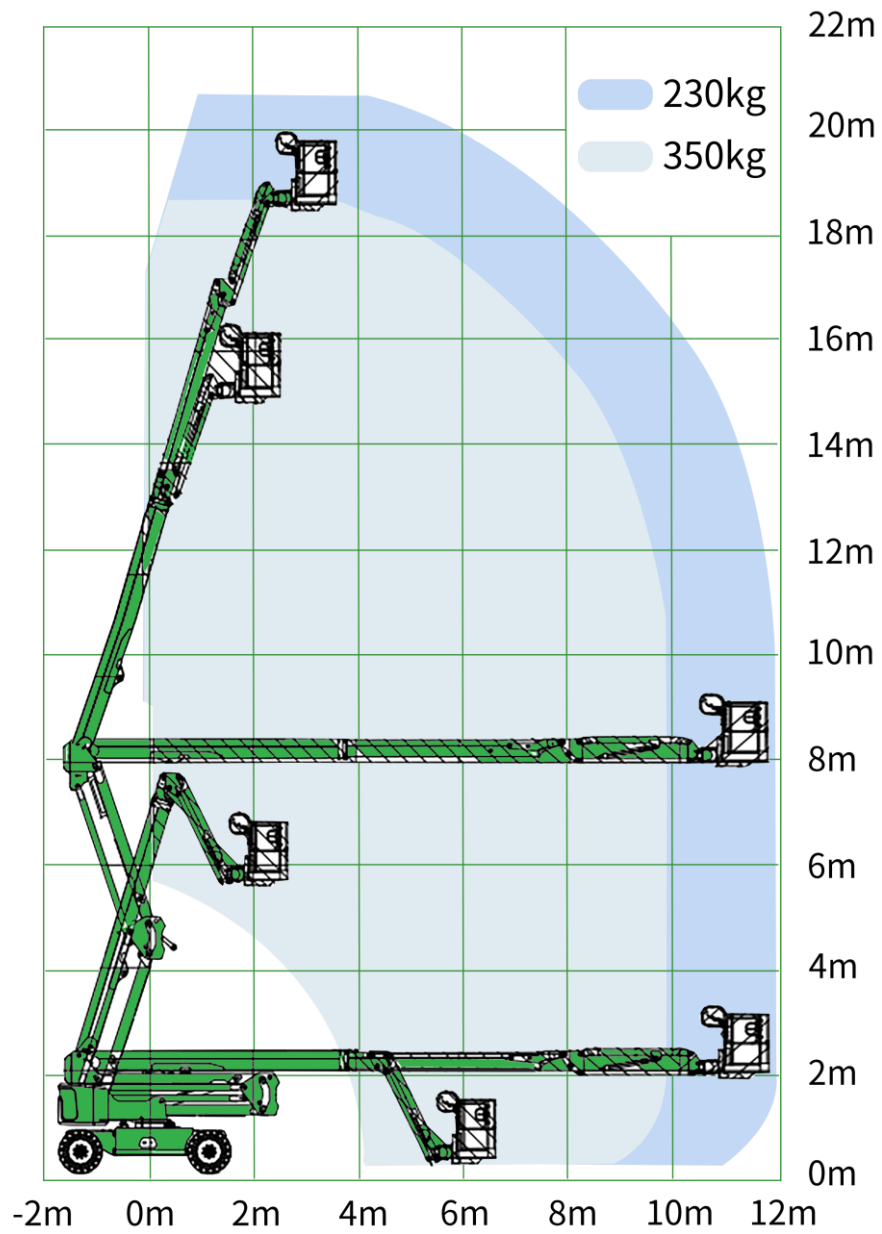


VMAXUSA 60ft Electric Boom Lift





Parameters	
Model	SJV1820A
Specifications	
Max. Working height	20.7m
Max. Platform height	18.7m
Max. up and over clearance	8.0m
Max. Working radius	11.98m
Ⓐ Platform width	0.76m
Ⓑ Platform length	1.8m
Ⓒ Height – stowed	2.38m
Ⓓ Length – stowed	8.49m
Ⓔ Width	2.49m
Ⓕ Wheelbase	2.5m
Ground clearance - center	0.3m
Productivity	
Max. Lift capacity	230kg/350kg
Number of platform occupants	2/3
Platform rotation	±80°
Turntable rotation	360°
vertical jib rotation (up/down)	±70°
Drive speed – stowed	4.8km/h
Gradeability – stowed	45%
Max. Working angle (Tilt sensor activation)	3°
Turning radius (outside)	5.0m
Drive and steer	4×2
Weight	9100kg
Power	
Battery	48GTBZ/420Ah
Control voltage	24GTBZ
Pump motor	12kw
Drive motor	3.3kw



Range of motion GTBZ18

Option availability

Solid, non-marking tires

Mechanical Anti-Extrusion Protection System

Air tube connection to platform option

Lead-Acid Battery and Power plus generator

Aluminum alloy and Insulated working bucket

Cold-resistant, fire-resistant and biodegradable hydraulic oil

Functional features

230kg/350kg • Industry-leading load capacity 256kg/350kg.

- The smallest CBM when stowed in the industry make it easy to transit.
- “Σ”shaped boom improves work efficiency.
- 5m Turning radius is maneuverable and flexible, challenging to work in narrow spaces.
- Adopted long endurance design and equipped with a 48GTBZ, 420Ah large-capacity battery to provide longer battery life.
- Boom self-weight lowering technology moves steady and energy-saving.
- Advanced four wheel AC driven technology and steering differential control technology provide strong and steady driven experience. Drive grade ability reaches 45°
- The combined application of AC pump control and proportional control technology provides a safer and more stable operation experience.
- Environmental friendly , zero emission, low noise and traceless driving are suitable for indoor clean and construction operations.